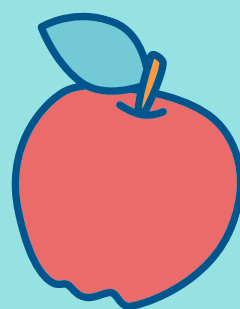


ESSENTIAL CONDITIONS FOR THE IMPLEMENTATION OF COMPREHENSIVE SCHOOL HEALTH

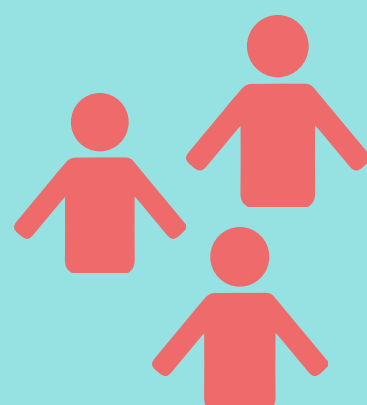


Core Conditions are the conditions necessary for CSH to be successfully implemented. **Contextual Conditions** have a great degree of influence on the ability for the core conditions to be obtained.

THE CORE CONDITIONS

STUDENTS AS CHANGE AGENTS

Students are the heart of any CSH project and their enthusiasm and energy creates increased engagement. In the home environment, students are the drivers of change and can help engage parents through their buy-in.



SCHOOL-SPECIFIC AUTONOMY

Interventions need to be customized to meet the needs of the school. Interventions should be flexible, build on the school's strengths and assets, be tailored based on school-specific evidence, and provide a sense of school ownership.



DEMONSTRATED ADMINISTRATIVE LEADERSHIP

School principals are seen to play an invaluable role throughout CSH implementation process and are a key stakeholder in facilitating a culture shift within a school community. The key is that principals are actively engaged, rather than merely supporters of school health champions and offering passive buy-in.



DEDICATED CHAMPION TO ENGAGE SCHOOL STAFF

School health champions are imperative from a leadership perspective and for getting projects up and running and on-going integration of CSH in schools. However, school health champions can sometimes become a barrier as buy-in from all school staff is crucial for sustainability.



COMMUNITY SUPPORT

Establishing strong internal and external relationships and building partnerships with the community play a key role in the success of CSH, especially before and during implementation. Community connections can help strengthen the type of programs schools are able to offer.

EVIDENCE

Evidence in the form of school-based process and outcome data, individualized school reports, and research findings are essential for planning, refining, and supporting implementation of CSH.



PROFESSIONAL DEVELOPMENT

Professional development and training prior to implementation is key for understanding the project and building teachers' self-efficacy. Ongoing PD is essential for strengthening knowledge and skills needed to support the success of CSH.

THE CONTEXTUAL CONDITIONS

TIME

Enough time needs to be dedicated for implementation and success. Allotting time allows for CSH to be viewed as an embedded part of the school's culture.

FUNDING AND PROJECT SUPPORT

Sustainable funding and support from CSH team managers and project staff greatly contribute to the facilitation of implementation.



READINESS AND PRIOR COMMUNITY CONNECTIVITY

A clear understanding of CSH and why it's important along with trusting relationships help stakeholders build competency, enthusiasm, and ownership, which can lead to a more natural implementation.